

BEVERLY PREMIERE & BEVERLY CLASSIC

Jumpers in Hunt Country



WEEK 1: OCTOBER 24-26
WEEK 2: OCTOBER 31-NOVEMBER 2

Beverly Equestrian
7120 Beverly Ln, The Plains, VA 20198

FOR CLASS LIST, ENTRY FORMS, AND
STABLING REQUESTS, PLEASE VISIT: HORSESPOT.NET

*Pending USEF Approval

THANK YOU TO OUR SPONSORS!



SALAMANDER®
COLLECTION



TRI COUNTY
FEEDS



The
**Baldwin
Group**



STRIDER



DAVIS EQUINE
EQUINE SPORTS MEDICINE

PLATINUM
PERFORMANCE®

FOR SPONSORSHIP OPPORTUNITIES AND PROGRAM
ADVERTISING, PLEASE VISIT:

www.beverlyequestrian.com/usef-jumper-shows

Email: beverlyclassic@gmail.com

**Protecting the Possible
and Rising on the List.**

*#15 on the 2025
Business Insurance Top 100*

#15



**The
Baldwin
Group**



Welcome TO THE USEF JUMPER SHOWS AT BEVERLY



At Beverly, we believe the heart of our sport lies in its grassroots. Every rider begins somewhere, and our mission is to ensure that all competitors—whether just stepping into their first jumper class or preparing for larger circuits—have a place where they feel welcomed, supported, and celebrated.

This fall marks the debut of Beverly's USEF-rated jumper competitions:

- The Beverly Premiere (October 24–26, 2025)
- The Beverly Classic (October 31–November 2, 2025)

These competitions build upon the foundation of our local show series and November Finals, extending the same values of accessibility, organization, and community into a rated environment.

Our venue has been thoughtfully designed to support this mission. Beverly features permanent stabling, multiple all-weather arenas, a sweeping derby field, manicured schooling areas, and elegant viewing decks. Competitors can expect a polished and professional atmosphere, attentive management, and a championship-level experience.

Beverly's inaugural USEF jumper shows are designed for all levels:

- *Grassroots riders gain a pathway into rated sport.*
- *Seasoned competitors enjoy a high-quality, competitive venue from .65m to 1.25m.*

All riders share in a community-focused premier event atmosphere.

We are proud to welcome you to Beverly for this milestone event. Thank you for joining us as we celebrate sport, progress, and the journey of every rider.

The Beverly Team





JUDGES • STEWARDS • STAFF

ORGANIZER

Beverly Equestrian Events

MANAGEMENT

Manager

Bill Yeager (Week 1)
Nick Tighe (Week 2)

Hospitality

Lindsay Cooley Swan

EMT

Pam Davison
540-219-0081

Vet on Call

Chad Davis
540-998-0627

Farrier on Call

Iain Mulligan
802-498-8161

OFFICIALS

Judges

Cindy Lytle (Week 1)
Rachel Bates (Week 2)

Ingate/Announcer

Kara Bailey (Friday)
Carol Himmel (Saturday-Sunday)

Scoring Jumper

Tiffany Carey

Steward

Katheryn Meadows (Week 1)
Bill Calvert (Week 2)

Course Designer

Bill Yeager (Week 1)
Nick Tighe (Week 2)

Secretary

Holly Potter Gilbey

Safety Coordinator

Darrin Mollett

*Recognized by USEF, USHJA, Take2TB, NAL/WIHS

**FOR CLASS LIST, ENTRY FORMS, AND STABLING
REQUESTS, PLEASE VISIT: HORSESPOT.NET**

Beverly Equestrian: 7120 Beverly Ln, The Plains, VA 20198

Email: beverlyclassic@gmail.com

Phone: 901-210-5067

THE BEVERLY PREMIERE | OCT. 23-26

TENTATIVE SCHEDULE (MAIN RING)

THURSDAY (TICKETED WARM UP)

9am-9:45am	.65m
10:00am-10:45am	.80m
11:00am-11:45am	.90m
12:00pm-12:45pm	1.00m
1:00pm-1:45pm	1.10m
2:00pm-4:00pm	1.15m
4:15pm-5:30pm	1.20m

FRIDAY

8AM

100. Open .65m - II.1	500. Open 1.0m - II.1
150.. JR/AM .65m - II.1	550, 553. JR/AM 1.0 - II.1
200. Open .80m - II.1	600. Open 1.15m - II.1
250. JR/AM .80m - II.1	650. JR/AM 1.15m - II.1
300. Open .90m - II.1	750. JR/AM 1.20m - II.1
350. JR/AM .90m - II.1	800. Take2 TB 1.0m - II.1
400. Open 1.0m - II.1	885. 5 Year Old Jumper 1.15M - II.2.b.
450, 453. JR/AM 1.0m - II.1	886. 6 Year Old Jumper 1.25M - II.2.b.
	887. 7 Year Old Jumper 1.30m - II.2.b.

SATURDAY

7:30AM

101. Open .65m - II.1.	501. Open 1.10m - II.1
151. JR/AM .65m - II.2.d	551, 554. JR/AM 1.10m - II.2.d
201. Open .80m - II.1	601. Open 1.15m - II.1.
251. JR/AM .80m - II.2.d	651. JR/AM 1.15m - II.2.d.
301. Open .90m - II.1.	751. JR/AM 1.20m - II.2.d
351. JR/AM .90m - II.2.d	801. Take2 TB 1.0m - II.2.d
401. Open 1.0m - II.1.	
451, 454. JR/AM 1.0m - II.2.d	

SUNDAY

8AM

102. Open .65m - II.1	502. Open 1.10m - II.1
152. JR/AM .65m - II.2.b	552, 556. JR/AM 1.10m - II.2.b
155. JR/AM Classic .65m - II.2.a	555. WIHS/NAL JR/AM 1.15m Classic - II.2.a
202. Open .80m - II.1	602. Open 1.15m - II.1
252. JR/AM .80m - II.2.b	652. JR/AM 1.15m - II.2.b
255. JR/AM Classic .85m - II.2.a	655. NAL/WIHS JR/AM Classic 1.15m - II.2.a
302. Open .90m - II.1	752. JR/AM 1.20m - II.2.b
352. JR/AM .90m - II.2.b	755. NAL/WIHS JR/AM 1.25m - II.2.a
355. JR/AM Classic .95m - II.2.a	855. Take2TB Classic 1.0m-1.05m - II.2.a
402. Open 1.0m - II.1	
452, 456. JR/AM 1.0m - II.2.b	
455. JR/AM Classic 1.05m - II.2.a	

THE BEVERLY CLASSIC | OCT. 30-NOV. 2

TENTATIVE SCHEDULE (MAIN RING)

THURSDAY (TICKETED WARM UP)

9am-9:45am	.65m
10:00am-10:45am	.80m
11:00am-11:45am	.90m
12:00pm-12:45pm	1.00m
1:00pm-1:45pm	1.10m
2:00pm-4:00pm	1.15m
4:15pm-5:30pm	1.20m

FRIDAY

8AM

100. Open .65m - II.1	500. Open 1.0m - II.1
150.. JR/AM .65m - II.1	550, 553. JR/AM 1.0 - II.1
200. Open .80m - II.1	600. Open 1.15m - II.1.
250. JR/AM .80m - II.1	650. JR/AM 1.15m - II.1
300. Open .90m - II.1	750. JR/AM 1.20m - II.1
350. JR/AM .90m - II.1	800. Take2 TB 1.0m - II.1
400. Open 1.0m - II.1	
450, 453. JR/AM 1.0m - II.1	

SATURDAY

7:30AM

101. Open .65m - II.1.	501. Open 1.10m - II.1
151. JR/AM .65m - II.2.d	551, 554. JR/AM 1.10m - II.2.d
201. Open .80m - II.1	601. Open 1.15m - II.1.
251. JR/AM .80m - II.2.d	651. JR/AM 1.15m - II.2.d.
301. Open .90m - II.1.	751. JR/AM 1.20m - II.2.d
351. JR/AM .90m - II.2.d	801. Take2 TB 1.0m - II.2.d
401. Open 1.0m - II.1.	
451, 454. JR/AM 1.0m - II.2.d	

SUNDAY

8AM

102. Open .65m - II.1	502. Open 1.10m - II.1
152. JR/AM .65m - II.2.b	552, 556. JR/AM 1.10m - II.2.b
155. JR/AM Classic .65m - II.2.a	555. WIHS/NAL JR/AM 1.15m Classic - II.2.a
202. Open .80m - II.1	602. Open 1.15m - II.1
252. JR/AM .80m - II.2.b	652. JR/AM 1.15m - II.2.b
255. JR/AM Classic .85m - II.2.a	655. NAL/WIHS JR/AM Classic 1.15m - II.2.a
302. Open .90m - II.1	752. JR/AM 1.20m - II.2.b
352. JR/AM .90m - II.2.b	755. NAL/WIHS JR/AM 1.25m - II.2.a
355. JR/AM Classic .95m - II.2.a	855. Take2TB Classic 1.0m-1.05m - II.2.a
402. Open 1.0m - II.1	
452, 456. JR/AM 1.0m - II.2.b	
455. JR/AM Classic 1.05m - II.2.a	



BEVERLY HUNTER/JUMPER SHOW SERIES

VHSA/BHSA Recognized

SEPTEMBER 20, 2025

OCTOBER 18, 2025

CIRCUIT FINALS - NOV. 21-23, 2025

PRESENTED BY:





ENTRY FEES & STRUCTURE

Show

- Office Fee \$75
- Security/Medical all \$35

Mandatory Fees

- USEF \$8
- UHSJA \$5
- Drug & Medication \$15

Stabling Fees

- Permanent Stall (includ. initial bedding) \$300
- Tent Stall (not includ. bedding; non-refundable) \$325
- Ship-in Week \$75
- Non-showing \$75

Entry Fees

- Post/Late \$50
- Same Day Add \$10
- Same Day Scratch NA
- Scratch Show \$150

Entries Open

Tuesday, September 16, 2025

Entries Close (Deadlines)

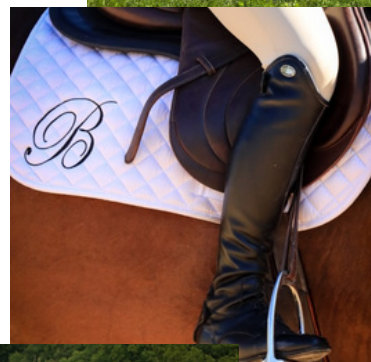
Friday, October 17, 2025 *Premiere*

Friday, October 24, 2025 *Classic*

Stall Count (Deadlines)

Tuesday, October 07, 2025 *Premiere*

Tuesday, October 14, 2025 *Classic*



**FOR CLASS LIST, ENTRY FORMS, AND STABLING
REQUESTS, PLEASE VISIT: HORSESPOT.NET**

Beverly Equestrian: 7120 Beverly Ln, The Plains, VA 20198

Email: beverlyclassic@gmail.com

Phone: 901-210-5067

Permanent Onsite Stabling
Initial Bedding Provided by
Tri-County Feeds

TCF Delivery Department:
540-364-1891
press 1 for deliveries





JUMPER SPECIFICATIONS

NON-NOMINATED JUMPER SECTIONS: .65m, .80m, .90m, 1.0m, 1.10m, 1.15m, 1.20m Thoroughbred Jumpers, Junior/Amateur .65m through 1.25m and Young Jumpers

ELIGIBILITY

Any horse, regardless of winnings, is eligible to enter any .65m-1.0m and Open Jumper Classes.

Amateur Jumper: Amateurs may compete up to two horses, they do not own, per height section of Amateur Jumpers per competition. There is no limit on the number of horses that may be ridden by the owner or an amateur member of the owner's family.

ENTRIES

Late entries will be subject to the Post Entry Penalty and may require the horse to be first in the order. Classes entered on the initial entry constitute an Entry.

JUMPER TABLES

Refer to the Time Schedule. Management reserves the right to change tables based on weather, entries, or other criteria.

TIME ALLOWED

The Time Allowed will be based on a speed 382 yards per minute for all other sections unless otherwise noted, and may be adjusted accordingly.

MARTINGALES & DRAW REINS

1.30m or below: No martingale restrictions when used in a conventional manner. Draw Reins not permitted above 1.30m (and all classes restricted to young horses): Only running martingales used in the conventional manner. Draw Reins / German Martingales allowed when schooling or in classes 1.25m or below that do not offer prize money. No headset devices allowed in any class. Note: Ponies may not be ridden by a Junior in draw reins or German martingales at any time.

TIES

Ties involving first place will be decided based on fastest time. Ties not involving first place will be decided upon time unless otherwise stated.

2025 ZONE 3 SPECIFICATIONS (CHECK USHJA.ORG FOR THE MOST UPDATED SPECS.)

Junior/Amateur 1.0m-1.05m & Junior/Amateur 1.10m-1.15m Jumper: Open to Juniors and Amateurs on horses or ponies. Horse/Rider Combinations may cross enter between the 1.0m-1.05m and 1.10m-1.15m divisions but may only enter one Classic. 1.0m-1.05m Riders may not cross enter into any class above 1.15m at the same competition. 1.10m-1.15m Riders may not cross enter into any class above 1.25m at the same competition.

SPECIAL CLASSES

Special Class Nomination/Entries: Special Classes entered on the initial Entry constitute an Entry. Special Classes must be added the day before the class or pay the Special Class Post Entry Fee and may be required to be first in the order.

Classics are considered Special Classes: Horses must be entered the day before the class or pay the Classic Post Entry Fee.

- Any excessive use of force (i.e. striking a horse with a crop more than 2 times) or striking a horse in the head or neck or in front of the girth will result in immediate disqualification of that entry from further competition and may result in charges by the USEF Steward and/or officials.
- No Poling or Offsets are allowed on the grounds.
- Current USEF schooling rules and procedures will apply. Any disregard for the schooling rules and/or failure to abide by the instructions of the schooling supervisor will result in elimination from the class in which the incident occurred and forfeiture of all entry fees associated with such class. The show officials and Steward may issue charges and/or warning cards upon review.
- Proper attire is required for all Jumper Classes. Solid or tactful polo shirts are acceptable for Non-Classic classes. No sleeveless, t-shirts, hoods, or scoop neck shirts are allowed. Riders should be neatly attired and turned out.
- Office issued numbers must either be worn on the riders back or clearly displayed on the horse so the Paddock Master and Judges can clearly see the number upon entering the arena. Small bridle or martingale numbers are not acceptable.
- The 45 Second Rule will be observed in all Jumper classes & Classics.
- All Jump Orders will be according to USEF rule JP 111.2. It is the rider's responsibility to ensure they are declared the day prior by 4pm. It is also the rider's responsibility to ensure they are on the jump order prior to a class start.
- Riders may scratch a class without penalty and receive a refund after the course walk but prior to the first horse on course. No refunds are issued after a class has started if you have not scratched accordingly.
- Championships awarded in Junior/Amateur sections. To be eligible for any division/section or classic the horse/rider must have been entered in one other jumper class in their division/section or classic.
- Any horse showing in a Classic must have competed and broken timers to be eligible to do Classic for that section.

THE BEVERLY PATHWAY



A place for every rider to thrive.



JUMPER SPECIFICATIONS^{CONT'D}

COMBINATIONS

Child/Adult and Junior/Amateur Jumper sections high/low may be combined with less than 4. Must have 4 in each class or classic to be filled or management may combine with similar class or classic in its discretion.

SPECIAL CLASS SCRATCH

Any scratch must be made before the class starts or be accompanied by a Vet's Certificate. See "Rules & Regulations" for more information. In the event of Scratch on the day of the class, horses are subject to the Day of Scratch Fee.

ORDER OF GO

The Order of Go will be drawn. In the jump-off, if any, all horses will go in the original drawn order.

ATTIRE

Formal attire required in Classics. Proper attire required in all other classics.

TROPHY & RIBBONS

1-6 in Special Classes unless otherwise stated.

SHOW CHAMPION OR CIRCUIT CHAMPION:

Classics will not count toward Show or Circuit Champion awards.

Division/Class	CLASS NUMBERS	HEIGHT	CLASS TYPE	CLASS FEE	PRIZE MONEY CLASS
.65m Open Jumper II.1	100, 101, 102	0.65m	II.1	\$55	
.65m JR/AM Jumper II.1	150	0.65m	II.1	\$55	
.65m JR/AM Jumper II.2.d	151	0.65m	II.2.d.	\$55	
.65m JR/AM Jumper II.2.b	152	0.65m	II.2.b.	\$55	
\$150 .65m Open Jumper II.2a CLASSIC	155	0.65m	II.2.a.	\$55	\$150
.80m Open Jumper II.1	200, 201, 202	0.80m	II.1	\$55	
.80m JR/AM JUMPER II.1	250	0.80m	II.1	\$55	
.80m JR/AM JUMPER II.2.d	251	0.80m	II.2.d.	\$55	
.80m JR/AM JUMPER II.2.b	252	0.80m	II.2.b.	\$55	
\$250 .85m JR/AM Jumper II.2a CLASSIC	255	0.85m	II.2.a.	\$60	\$250
.90m Open Jumper II.1	300, 301, 302	0.90m	II.1	\$55	
.90m Junior/Amateur Jumper II.1	350	0.90m	II.1	\$55	
.90m Junior/Amateur Jumper II.2d	351	0.90m	II.2.d.	\$55	
.90m Junior/Amateur Jumper II.2b	352	0.90m	II.2.b.	\$55	
\$350 .95m Junior/Amateur Jumper Classic II.2a	355	0.95m	II.2.a.	\$65	\$350
1.0m Open Jumper II.1	400, 401, 402	1.0m	II.1	\$55	
1.0m Amateur Jumper II.1	450	1.0m	II.1	\$55	\$100
1.0m Amateur Jumper II.2b	451	1.0m	II.2.d.	\$55	\$100
1.0m Amateur Jumper II.2.d	452	1.0m	II.2.b.	\$55	
1.0m Junior Jumper II.1	453	1.0m	II.1	\$55	\$100
1.0m Junior Jumper II.2b	454	1.0m	II.2.d.	\$55	\$100
\$250 1.05m Amateur Table II.2a CLASSIC	455	1.05m	II.2.a.	\$65	\$250
\$250 1.05m Junior Table II.2a CLASSIC	455	1.05m	II.2.a.	\$65	\$250
1.0m Junior Jumper II.2b	456	1.0m	II.2.b.	\$55	
1.10m Open Table II.1	500, 501, 502	1.10m	II.1	\$55	
1.10m Amateur Table II.1	550	1.10m	II.1	\$55	
1.10m Amateur Table II.2d	551	1.10m	II.2.d.	\$55	
\$200 1.10m Amateur Table II.2b	552	1.10m	II.2.b.	\$60	\$200
1.10m Junior Table II.1	553	1.10m	II.1	\$55	
1.10m Junior Table II.2d	554	1.10m	II.2.d.	\$55	
\$500 NAL/WIHSJR/AM 1.15m Jumper Classic II.2a	555	1.15m	II.2.a.	\$50	\$500
\$200 1.10m Junior Table II.2b	556	1.10m	II.2.b.	\$60	\$200
1.15m Open Table II.1	600, 601, 602	1.15m	II.1	\$55	
1.15m JR/AM Table II.1	650	1.15m	II.1	\$55	
1.15m JR/AM Table II.2d	651	1.15m	II.2.d.	\$55	
1.15m JR/AM Table II.2b	652	1.15m	II.2.b.	\$55	
\$500 NAL/WIHSJR/AM 1.15m Jumper Table II.2a CLASSIC	655	1.15m	II.2.a.	\$75	\$750
\$350 1.20m JR/AM Table II.1	750	1.20m	II.1	\$55	\$350
\$350 1.20m JR/AM Table II.2d	751	1.20m	II.2.d.	\$55	\$350
1.20m JR/AM Table II.2b	752	1.20m	II.2.b.	\$55	
\$1,000 JR/AM NAL/WIHS 1.25m Table II.2a CLASSIC	755	1.25m	II.2.a.	\$100	\$1,000
Take2 TB JUMPER II.1	800	1.0m	II.1	\$55	
Take2 TB JUMPER II.2b	801	1.0m	II.2.d.	\$55	
\$400 Take2 TB Table II.2a CLASSIC	855	1.0m-1.05	II.2.b.	\$75	\$400
5 YEAR OLD JUMPER 1.15M	885	1.15M	II.2.b.	\$45	
6 YEAR OLD JUMPER 1.25M	886	1.25M	II.2.b.	\$45	
7 YEAR OLD JUMPER 1.30M	887	1.30M	II.2.b.	\$45	



Event MAP

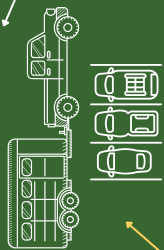


7120 BEVERLY LN., THE PLAINS, VA 20198

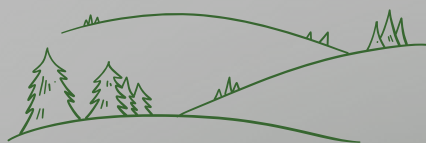
Beverly Lane



Competitor SERVICES



Paddock Trailer &
Event Parking



Vendor/Staff &
Emergency Parking



Food Truck

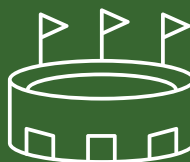


Main
Barn

Check-in

Veranda

Viewing Deck



Main Ring

Warm-up



7120 BEVERLY LN., THE PLAINS, VA 20198

Equine Health Entry Requirements

UPON ARRIVAL ALL HORSES MUST HAVE & PROVIDE:

NEGATIVE COGGINS REQUIRED DATED WITHIN TWELVE MONTHS.

Valid within (365 days) of the ending date of each show . This includes horses that originate from the state where the event is being held. All horses entering the Show Grounds must have a Negative Coggins on file. Coggins must reflect the horse's SHOW NAME. **Please bring paper copy of Coggins for our file.**

PROOF OF VACCINATION.

Via a signed statement from the attending veterinarian that the horse has been vaccinated against the following:

Within 6 months (180 days) of each show: Equine Influenza

Within 6 months (180 days) of each show: EHV 1 and EHV 4

If a vaccination will expire during one of the shows, the horse must receive its new vaccination prior to being issued a competition number for that show.

VIRGINIA: HEALTH CERTIFICATE/CERTIFICATE OF VETERINARY INSPECTION.

Virginia of Agriculture and Consumer Services require each horse originating from out of state to have a valid Certificate of Veterinary Inspection (Health Certificate) dated within 30 days of entry into Virginia.

PRESENTATION OF HEALTH REQUIREMENTS.

The Equine Health Entry Requirements are required for all horses entering the Show Grounds both Showing and Non-Showing. These documents must be filed in the Show Office before any competition numbers will be issued. In addition, random checks for Equine Health Entry Requirements will occur. Be sure to keep a copy of all Equine Health Entry Requirements in an easily accessible spot to ensure compliance with this requirement. The results on all required papers must indicate the horse's registered (show) name.

Any horse not accompanied by these documents will be directed to the Show Veterinarian to obtain the required documents and/or vaccinations, and/or will be placed in quarantined stabling until the proper documents are obtained. Any horse showing signs of fever/ illness/stress is subject to examination by HITS Officials and/or the Show Veterinarian, who may at their sole discretion, place the horse in quarantined stabling or take further action if deemed necessary.

Health Documentation: All ship-ins/day trippers (showing or non-showing) must file the proper Health Requirements in the show office, and must be prepared to present those health records at any time while on the Showgrounds. Ship-ins/day trippers will be subject to random checks by Show Staff. Keep a copy of all horse's records to ensure compliance with this requirement. If proper records are not immediately available, the horse(s) a) must remain under Show Staff observation until the paperwork is presented, or b) will be asked to leave the grounds.

Any horse on grounds with a temperature of 101.5+ must be reported to official show veterinarian. Upon veterinary examination, if diagnostic testing is deemed necessary, testing will be conducted at owner's expense. If veterinarian suspects infectious disease after inspection, the horse will be required to go to isolation or off the property.

See Rules and Regs for more information.



SALAMANDER[®]
COLLECTION



Voted #1 Best Luxury Hotel Brand, USA Today
Named one of the World's Favorite Hotel Brands, Travel + Leisure



SALAMANDER[®]
COLLECTION

At Salamander, we believe in creating a sense of belonging. We believe in the power of embracing the local community, and in the concept of universal acceptance and the welcoming atmosphere it brings. We hold that the smallest of details make the biggest of differences, and that both colleagues and guests should be treated with genuine respect. We are committed to fostering a culture of care, kindness and warmth.



RIDING CLUB

LESSON PROGRAM



From the very first Welcome Lesson to group lesson packages and individualized private training, our programs are designed to fit different goals, schedules, and budgets. School horse available.

- ✓ Clear Skills Progression - from Introductory to Advanced
- ✓ Onsite Schooling Shows
- ✓ Indoor/outdoor facilities for year-round participation



Horse Show Management & Fees

HORSE SHOW MANAGEMENT RESERVES THE RIGHT TO INTERPRET ALL QUESTIONS AND CONDITIONS IN REGARD TO OR ARISING OUT OF, OR INCIDENT TO THE SHOW WITHOUT CLAIMS FOR DAMAGES OR RECOURSE OF ANY KIND. ALL QUESTIONS NOT COVERED IN THESE RULES AND REGULATIONS SHALL BE DECIDED BY THE MANAGEMENT; ITS DECISION TO BE FINAL.

The Management reserves the right to limit entries in any class, section, or division, to refuse, accept conditionally, or to cancel any entries, disqualify any riders or exhibitors, prohibit exhibition of entries, and cancel award prizes, without any claim for damages; to change any course, to add a dotted line, to cancel or combine any unfilled classes, or to reschedule classes, after due notice to exhibitors; to change rings or rotate judges; to change specifications in jumper classes as competition warrants.

Every horse entered herein for competition will be under the control of the Management, but the Management will in no case be responsible for any loss or damage that may occur, and it shall be a condition of entry that each exhibitor shall hold the Horse Show and the officials, employees, directors, officers, sponsoring entities of the Horse Show and the facilities at which the Horse Show is held blameless for any loss or accident to his horse(s), employee(s), or equipment which may occur from sickness, fire or other cause.

Entry Procedure

- Entries must be submitted online via Horse Spot. **Faxed, mailed or emailed entries will not be accepted.**
- Visa, MasterCard, Discover & American Express are accepted. A 3.99% convenience fee will be added to all credit card transactions
- Facility Fee, Stall/Ship-in Fee and all other applicable fees on the Entry must be submitted with the Entry or the Entry will be considered Late
- Entry must be submitted in its entirety with all required information including Prize Money Payee.

Entry Policy

- Horse Deposit Fee will be credited to the horse's entries only if the Entry is received by the Closing Date and meets the Entry Procedure.
- Entries received after the Closing Date will be Late and subject to the Post Entry Penalty.
- A Signed Open Check or Credit Card Authorization must be lodged with the Show Secretary every week before Numbers are issue.
- Accounts must be closed at the end of each show week. Management will close Exhibitor Accounts that have not been settled at the conclusion of each show. **Billing adjustments will only be considered if submitted within 72 hours after the show concludes; no billing issues will be addressed during the show.**
- Entries will not be accepted until the previous weeks' balances are closed.
- Exhibitors are encouraged to close out their account in person Exhibitors who do not close out in person automatically authorize Management to close their account using the Credit Card on file. **Billing adjustments will only be considered if submitted within 72 hours after the show concludes; no billing issues will be addressed during the show.**
- The Horse Show policies herein stated regarding scratches and refunds will be followed regardless of weather and in place of GR 912.
- An **All Inclusive Facility Fee of \$75** will be assessed to all showing horses. This fee entitles the horses to unlimited adds/scratches according to the add/scratch policy (does not apply to Special Classes) as well as access to riding and lunging areas, and qualified Medical Personnel during the hours of the shows.

Billing Policy

- All entry, stall, feed, and other charges are to be paid weekly and, without exception, must be paid in full by the end of any consecutive showing weeks.
- Prize money won will only be applied if the payee has been provided with a proper SSN# or Fed Tax ID# and complete mailing address. Net Prize Money credits will be issued as a check within 30 days as required by USEF and mailed or hand-delivered during consecutive weeks of showing and will be valid for 60 days from issuance. Reissuance of checks must be requested within 90 days.
- At the end of every calendar year, tax-eligible prize money recipients will receive an IRS Form 1099-MISC reporting taxable prize money income for that year.

Post Entry Fees

- Entry received after the Closing Date: \$50
- Incomplete Entry: \$50

Hores Show Management & Fees cont'd

Entry Clarification

- Classes may only be entered or declared by using a Class Number. A Class Number written on the Entry Form, Add Scratch Form, or Barn Add/Scratch Form or submitted online constitutes a Class Entry.
- An entry with incomplete information for horse, owner, rider or trainer such as a horse entered as "Entry" or "TBA" or any such derivative, will be subject to the \$50 Incomplete Entry Fee. An entry with missing USEF/USHJA or signatures is also subject to this fee.
- Any exhibitor who does not compete in a class in which he/she is officially entered, and does not scratch according to the Scratch Procedures outlined below, will be billed for the class. Horses shown in a class without being officially entered will be assessed a penalty as shown below.
- Exhibitors are responsible for a knowledge of the Rules and Regulations governing the Horse Show and for their own errors and omissions. In the case of a violation of a cross entry restriction, the exhibitor will forfeit the entry fee, class placing, and prize money award.
- Show means the Show Week.
- Non-Showing Horses must be properly entered, wear an entry number and provide coggins and vaccinations and **will be charged a fee of \$75 weekly.**
- Any entry into a Classic must have competed and gone through timers in that section to be eligible for Classic.

Trainers Barn Account

- Trainers may create a "Barn Account" to order tack stalls, paddocks, feed/shavings, and may be split at the show.
- Feed/shavings may be split at the show.
- Individual owners/riders should add miscellaneous items such as extra stalls, paddocks, etc, to their horse's Entry Form.

Add/Scratch/Change

Any class add, scratch, or change, or any complete Show Scratch must be made in email to the Show Secretary or via Horse Spot or the show's online add/scratch form by email and received prior to the start of the applicable class or show. Scratching a class "at the gate" does not constitute an official scratch. Once a class or division begins, it may not be scratched, except for a Vet Scratch. If a Vet Scratch, the horse must be scratched in the Show Office on the day of the class and the Official Show Vet's Certificate must be received that day. Scratch Fee will still apply, A class that has been closed may not be scratched.

- **Scratch Class:** No Charge if scratched before class starts. Once class has started it may not be scratched.
- **Scratch Show:** \$150.
- **Scratch Special Class:** \$50 Day of unless otherwise noted.
- **Add Class:** \$10 if added later than 4pm the day before the class.
- **Add Classics:** \$10 Day of and may go first in the Order of Go.
- **Horse Substitution:** \$60 (\$50 Scratched Entry and \$10 Substitute Entry).
- **Horse Shown in class but not Entered:** \$20 Per class, if not entered in the Show Office according to the procedure above.

Combining, Dividing or Canceling Divisions, Classes or Classics

The Decision to Combine, Cancel or Divide classes will be made at the discretion of Show Management within one hour of the close of the Horse Show Office the night before the class. The update will be noted on the "How Many" schedule on the website. No other notice is required or will be given.

- **Combining:** Once a class/classic/division has been combined due to insufficient entries, it will not be re-divided for additional entries on the day of the class.
- **Dividing:** A class/classic/division that has been offered as split may be combined on the day of if scratched entries warrant. Management has the right to run all sections of the class/classic/division in their entirety before pinning if insufficient entries seem likely.
- **Canceling:** A class/classic/division that has been cancelled due to insufficient entries will not be reinstated for additional entries on the day of the class.

Refunds

- **Refund of pre-paid fees** will be given for show scratches received in writing, and adhering to the procedure above, and prior to or on the Closing Date.
- **Refund for Scratch Fees, Stalls & Other** will not be given for entries scratched after the Closing Date. Exhibitors are responsible for any such outstanding fees.
- **If eligible for refund,** a check will be mailed or the funds returned to the credit card on which the payment was made within 30 days of the completion of the Circuit.
- **Office Fee is Non-Refundable.**

Billing Adjustments will only be considered if submitted within 72 hours after the show concludes; no billing issues will be addressed during the show.

Settlement of Accounts: All show accounts must be closed out at the show. Any open entry accounts will be closed by management and a \$50 processing fee will be added per entry.

Horse Show Management & Fees Cont'd

Move in/Move out date restrictions – Note: Arrival for stabling assignments must be between the hours of Wednesday between 8 AM and 5 PM through Sunday. Off-hour arrival allowed only with prior approval of Management

Stabling

Permanent Stalls are approximately 10'x10' with mats floors and portable doors. Permanent stalls will be available on a first come, first serve basis. Stall Fees are non-refundable after the Closing Date of Entries unless otherwise provided in the prize list.. Any stall order made by Entry, Fax, Email, Phone, Text or other method will be considered an official stall order and exhibitors will be responsible for payment. Stalls are not transferable or sublettable except within the same trainer group.

Bedding on straw is prohibited except when the horse's health is at issue.. Please obtain prior approval from Stable Office. Clean-up fee may apply. Exhibitors are responsible for using only those stalls assigned to them; any unassigned stall used for horses, tack, feed, grooming, dogs or storage of any item(s) will be added to the account and billed as a late weekly stall.

Exhibitors should notify the show office if any stall part is in need of repair; unless notified, the Management will assume the assigned stall(s) are deemed safe by the exhibitor, which should be satisfactory for USEF. Shavings are to be purchased through the preferred vendor of the Show. Any off-site shavings will result in an additional \$25 manure disposal fee per stall.

Services

- Feed Store: Hay, grain and bedding may be purchased from the horse show provider,. Please see the website for more information. No commercial feed or bedding source will be permitted to deliver on the show grounds.
- Horse Watch: Horse Watch extends from approximately 9 pm until 5 am daily.
- Trainer's Splits: This service allows trainers to split the show charges for miscellaneous items to their clients. Splits will be accepted until close of business Friday. Only items billed by the Horse Show such as feed, bedding, tack stalls, etc, will be split. Only dollar amounts will be split and totals will be rounded up. Splits will revert back to the trainer for payment if uncollected.

Non-negotiable checks/credit cards

- Returned Checks or Credit Cards, for any reason, will be assessed a penalty of \$50 or 10% of the face value of the check/credit card charge, which- ever is greater. Upon notification, exhibitors will have three days to make full payment, including penalty, in certified funds, cashier's check, money order, or credit card. An additional 3% Convenience Fee will be added to all Credit Card transactions. Sanctioning organizations will be notified if exhibitors fail to pay in full within three days. A monthly service fee equal to 18% per annum will begin accruing after 30 days. Note: First time returned checks will automatically be redeposited. A declined credit card will be resubmitted within several days. A closed account, Stop Payment, incorrect or incomplete credit card information or a chargeback will be turned over to sanctioning organizations immediately.
- Cash ONLY: May be required if you have previously given a non-negotiable check or credit card to Beverly. Contact our office.

Prize Money

- Prize Money will be applied to entries. The Payee will default to the Owner, if the Prize Money Recipient is not provided on the submitted entry each week. A valid Social Security or Federal ID number and complete mailing address must be provided. If the SSN/EIN has not been provided to the show office within 90 days of the competition, it will be forfeited. Net Prize Money credits will be issued as a check and will be mailed or hand-delivered within 30 days after the Show, thereby ending the show's responsibility. Exhibitors: Please verify the correct payee and mailing address is recorded in the Show Office. Beverly is not responsible for checks lost or issued to incorrect payees.
- If the SSN/EIN is not provided, Prize Money will be withheld until SSN / EIN is provided. If the IRS has notified us of a discrepancy in Payee name or SSN / EIN prize money will be withheld until the discrepancy is resolved.
- If an outstanding balance exists on an account, prize money may be withheld.
- If the SSN/EIN has not been provided to the show office within 90 days of the competition, it will be forfeited. Prize Money will not be reissued after 90 days.
- Prize Money Won by Foreign Exhibitors is subject to the U.S. Internal Revenue Service regulation requiring sporting events to withhold 30% of prize money. Foreign exhibitors should apply for a Social Security number and will be asked to complete Form W-8BEN prior to receiving prize money.
- Prize Money is awarded through 6th place in hunter classes and through 6th or 8th place in jumper classes. A class that pays based on a number of entries will pay based on the number of on-time entries and post entries will not be included in the number used to determine the payout. Special Class Prize Money distribution is published in this book.
- A class with fewer than three entries will not award prize money.

Social Media Policy

Management encourages positivity in the use of social media platforms and urges persons posting information about Beverly, its management, shows, exhibitors, officials, equine athletes, and others to exercise good judgement and think about the potential consequences of their posts and interactions on social media platforms. We urge those using social media to refrain from making derogatory, offensive, inflammatory, or false comments about other athletes, trainers, Beverly and its management, our equine athletes, USEF, or any individuals associated with our Beverly horse shows. Beverly reserves the right to remove third-party content from its social media platforms that violates its social media policy and in extenuating circumstances may block a user from Beverly social media sites for repeated offenses of its policy.



STRIDER



DAVIS EQUINE
EQUINE SPORTS MEDICINE



**VIRGINIA EQUINE REHABILITATION
AND PERFORMANCE CENTER**

Rules & Regulations

UNITED STATES EQUESTRIAN FEDERATION

EVERY CLASS OFFERED HEREIN WHICH IS COVERED BY THE RULES AND SPECIFICATIONS OF THE CURRENT USEF RULE BOOK WILL BE CONDUCTED AND JUDGED IN ACCORDANCE THEREWITH.

USEF MEMBERSHIP STATEMENT

Life, senior active and junior active members shall be eligible to participate in all classes at Regular Competitions, Eventing Competitions at the Modified Level or above and Combined Driving Competitions at the Advanced Level, Dressage, Reining and Vaulting Competitions and Endurance Rides. A non-member may participate as a handler, rider, driver, owner, lessee, or agent at Regular Competitions, Eventing Competitions, Dressage Competitions, Reining Competitions and Combined Driving Competitions upon payment of a Show Pass fee. Participants in the following classes are exempted from the Requirements of this rule: 1) leadline; 2) exhibitions; 3) games and races; 4) classes for 4-H members; 5) walk trot and academy classes (academy classes are classes limited to horses used regularly in a lesson program); 6) USDF introductory level tests, pas de deux and quadrille classes; 7) assistant handlers in Dressage Sport Horse Breeding classes.

FEDERATION ENTRY AGREEMENT

By entering a Federation-licensed competition and signing this entry blank as the Owner, Lessee, Trainer, Manager, Agent, Coach, Driver, Rider, Handler, Vaultor or Longeur and on behalf of myself and my principals, representatives, employees and agents, I agree that I am subject to the Bylaws and Rules of The United States Equestrian Federation, Inc. (the "Federation") and the local rules of The Brave Horse Show Series (Competition). I agree to be bound by the Bylaws and Rules of the Federation and of the competition. I will accept as final the decision of the Hearing Committee on any question arising under the Rules, and agree to release and hold harmless the competition, the Federation, their officials, directors and employees for any action taken under the Rules. I represent that I am eligible to enter and/or participate under the Rules, and every horse I am entering is eligible as entered. I also agree that as a condition of and in consideration of acceptance of entry, the Federation and/or the Competition may use or assign photographs, videos, audios, cable - casts, broadcasts, internet, film, new media or other likenesses of me and my horse taken during the course of the competition for the promotion, coverage or benefit of the competition, sport, or the Federation. Those likenesses shall not be used to advertise a product and they may not be used in such a way as to jeopardize amateur status. I hereby expressly and irrevocably waive and release any rights in connection with such use, including any claim to compensation, invasion of privacy, right of publicity, or to misappropriation. The construction and application of Federation rules are governed by the laws of the State of New York, and any action instituted against the Federation must be filed in New York State. See **GR908.4**.

USEF WAIVER

Everyone, including parents, grooms, guests, etc. must sign a USEF Waiver and Release of Liability, Assumption of Risk and Indemnity Agreement, this can be done on HORSESPOT.net at the time you do your online entries. Forms are available at www.usef.org.

MOTORIZED VEHICLE STATEMENT

Minors who do not have a valid driver's license which allows them to operate a motorized vehicle in the state in which they reside will not be permitted to operate a motorized vehicle of any kind, including, but not limited to, golf carts, motorcycles, scooters, or farm utility vehicles, on the competition grounds of licensed competitions. Minors who have a valid temporary license may operate the above described motorized vehicles as long as they are accompanied by an adult with a valid driver's license. The parent/legal guardian or individual who signs the entry blank as a parent or guardian of a minor operating a motorized vehicle in violation of this rule are solely responsible for any damages, claims, losses or actions resulting from that operation. Violations of this rule will be cause for penalties against those responsible for the child committing the offense. Wheelchairs and other mobility assistance devices for individuals with disabilities are exempt from this rule. The unsafe use of personal electronic transport devices, as determined by the competition officials and management in their sole discretion, that do not require a driver's license to operate, including but not limited to segways, hover boards, and single wheeled scooters is prohibited on competition grounds. Operating such devices in areas where people gather may be deemed "unsafe use" if there is a risk of harm to others. If the operator of the device is a minor, the parent/legal guardian or individual who signs the entry blank as a parent or guardian of a minor operating the device in violation of this rule is accountable and may be subject to penalties. Wheelchairs and other mobility assistance devices for individuals with disabilities are exempt from this rule.

STATEMENT AS TO FEDERATION FEE

(GR407.1-3) For every horse participating in any competition licensed by the Federation, a \$23 Federation Fee will be collected (\$15 shall be an Equine Drugs & Medication Fee to provide for research, inspection and enforcement of rules regarding use of medications and drugs).

SAFE SPORT STATEMENT

All USEF Life and Senior Active members, as well as participants who have regular contact with minor athletes, are required to comply with the U.S. Center for SafeSport training requirements to be eligible to participate in the competition. All participants must adhere to the U.S. Center for SafeSport Code, USEF Safe Sport Policy, and the Minor Athlete Abuse Prevention Policies. More information about these can be found at www.usef.org. As of Jan 1, 2019 every USEF adult member (18 years of age or older) with a Competing Membership must complete USEF's Safe Sport Training. You will do this when logged into your USEF account, preferably when you renew your membership. Failure to complete the safe sport training will disqualify you from competing in any capacity until it is completed. Junior riders that have reached their 18th Birthday must complete the Safe Sport.



First time Horse Spot user? Saddle up for Success

How to Add Entries

- ✓ Go to HorseSpot.net
- ✓ Search for your show
By Name, Venue, or Location
- ✓ Click Add Entry
Create a profile or Login (if you aren't already)
- ✓ Fill in Horse, Owner, Trainer & Rider Details
or Autofill your Saved User Information
- ✓ Easily Search to Find Classes & Divisions
or skip for now—you can add/scratch later on
- ✓ Hit Continue
Review Cart, Add an Additional Entry or [Checkout](#)

How to Add & Scratch

- ✓ Login and go to "My Shows"
- ✓ Click on your upcoming show
- ✓ View our Quick Add & Scratch Module
Toggle between options
- ✓ Choose your entry and a Division or Class
- ✓ Hit the "Add" or "Scratch" Button
- ✓ Review the status of your Adds or Scratches in the "Entries" module or in the "Orders" tab



HORSE SPOT

Discover schedules with real-time updates, live ringside results, posted orders, and important show information all on Horse Spot.

HAVE QUESTIONS? Contact Support@HorseSpot.net



Follow us at [@HorseSpotShows](#) on Instagram and [@Horse Spot](#) on Facebook

"Gorgeous barn and lovely experience."

"The facilities are second-to-none and the horses are well cared for and well trained."

"The facilities are exceptional—well-maintained stables, pristine arenas, and beautiful trails that really enhance the overall experience."



BEVERLY *B* EQUESTRIAN

- Multiple Competition Rings with GGT and sand mix footing
- Derby & Gallop Fields plus manicured grass lanes and wooded trails
- Private Decks, Verandas & Lounges for elevated spectator viewing
- Onsite Stabling with permanent barns and nearby trailer parking
- Permanent Restrooms, office facilities, and stone dust road access throughout

Trusted Nutrition Since 1996

Developed by Veterinarians to Address Health at the Cellular Level

All four wellness formulas provide omega-3 fatty acids, antioxidants, vitamins, trace minerals, amino acids and more to transform horse health at the cellular level — head to hoof, coat to gut. Now, with 1,100 IUs of vitamin E. Each bucket encompasses thousands of hours of research and the finest ingredients available.



For Sport | 100% Satisfaction Guaranteed

| Platinum Colic Coverage* Eligible Up to \$15K



WELLNESS & PERFORMANCE FORMULA

Platinum Performance® is the comprehensive nature, ingredients work synergistically at the cellular level to support every aspect of health and performance.

Recommended for:

- Young horses
- Performance horses
- Senior horses
- All activity levels

WELLNESS & PERFORMANCE + DIGESTIVE CARE

Platinum Performance® GI provides probiotics, prebiotics and additional glutamine for gastrointestinal and immune health in addition to comprehensive wellness support.

Recommended for:

- Digestive health concerns
- Occasional loose stool
- Difficulty maintaining weight
- Travel, training or competition

WELLNESS & PERFORMANCE + DIGESTIVE & JOINT SUPPORT

Platinum Performance® DJ is an innovative one bucket solution, combining advanced support for healthy digestion and joint function with premium wellness ingredients.

Recommended for:

- Performance & senior horses
- Seasonal allergies & respiratory care
- Advanced digestive & joint needs
- Gastric & hindgut maintenance

WELLNESS & PERFORMANCE + COMPLETE JOINT SUPPORT

Platinum Performance® C3, the only supplement of its kind, combines ASU in addition to other joint supporting ingredients with a whole-horse wellness formula.

Recommended for:

- Advanced joint care needs
- An injury or discomfort
- Intense training or competition
- Adv. tendon & ligament support



The Power of Nutrition Starts Within®

(800)553-2400 | PlatinumPerformance.com | (833)997-5250

PLATINUM
PERFORMANCE®

©2025 Platinum Performance®

LEARN TO PLAY POLO

No Riding Experience Needed



BEVERLYEQUESTRIAN.COM

Visitor Policies

GENERAL SAFETY

- Virginia regulations prohibit smoking in all arena, trails, and barns.
- No firearms or fireworks are permitted.
- Anyone involved in theft or destruction of property will be prosecuted.

VEHICLES

- Speed limits and traffic signs are strictly enforced.
- Every vehicle operator must have a valid driver's license and proof of insurance.
- Vehicles are not permitted in the interior of any barn.
- ATVs are not permitted on the grounds.
- Scooters, bicycles, Segways, or hoverboards operated in an unsafe manner will result in a fine.
- Staff reserves the right to restrict the operation of ANY vehicle while on the premises.

PETS

- All pets must have current rabies inoculations as prescribed by the state of residency.
- All pets must be crated or on leash while on Management premises. Owners of unsecured pets will incur a \$100 fine.
- It is expected that owners will clean up after their pets.
- No pets are allowed in the main barn except for ADA-registered Service Animals. Management requests that service dogs be identified as such.
- Dog policy: Must be leashed and under control at all times. Dogs are NOT allowed in the coliseum, in food prep, serving, and eating areas. Please do not bring your dogs to exhibitor parties or other social gatherings with large crowds. If your dog disrupts an exhibitor on course through barking or running into or beside a ring; you will be held financially responsible for the competitors round.

ALCOHOL

- All applicable ABC laws will be followed at events serving alcohol.
- Individuals, not presenting proof of age when requested, will not be served.
- Disorderly patrons will be removed from the premises.

GENERAL RULES

- Every horse-occupied stall will have a minimum of one bale of shavings, which may be purchased at the Stable Office/Welcome Center. Sawdust and/or straw is prohibited.
- Exhibitors, Trainers, and Owners will respect "No Lunging" signs as posted in arenas.
- No horses may be stabled in trailers or tied out overnight.
- For the health and safety of all, nothing should be attached to or suspended from the electrical conduit in the barns.
- No trash or sharps will be disposed of in the manure pits. Sharps should be placed in the appropriately labeled containers in each barn. Non-compliance will result in a \$1000 fine assessed to the show.
- Exhibitors who empty trash or manure in any of their assigned stalls or any unoccupied stalls will be assessed a \$500 fine. Appropriate receptacles are available for both.
- NO CAMPING.
- Any loss, theft, accident, or disturbance should be reported to Management at beverlyclassics@gmail.com.
- Lost and Found is located at the Security Office.
- All questions not covered in these rules and regulations, shall be decided by the management whose decision shall be final.
- Every horse entered for competition will comply with the rules of the management, but management will, in no case, be responsible for any loss or damage that may occur, and it shall be condition of entry that each exhibitor shall hold this horse show and the officials and employees of the show blameless for any loss or accident to his horse, employees, equipment, which may occur from sickness, fire or otherwise.
- The management reserves the right to refuse, accept conditionally, or to cancel any entries, disqualify any riders or exhibitors, prohibit entries and cancel award prizes without claims for damages; to cancel or combine unfilled classes, or to reschedule classes after due notice to exhibitors; to change rings or rotate judges.
- Exhibitors are notified that any act of discourtesy or disobedience to the judges or officials, on the part of the owner, manager, rider, or groom shall disqualify the horse, and the owner shall forfeit his entry fee and other fees.
- Management reserves the power to prohibit any person from attending or showing a horse in the ring and to remove any groom or horse from the show without being liable for compensation.
- In accordance with the 1989 Federal Waste Tracking Act, which restricts the disposal of medical waste, bio-hazardous medical waste containers will be provided in the stable area. All exhibitors and their agents are responsible for the proper disposal of this waste.
- Each entry must complete the enclosed entry form including all required numbers and signatures. It is the competitor and trainers responsibility to fill out the entry agreements honestly and properly. Forged signatures will not be accepted.
- Non-Showing Horses: Horses in stalls or on the grounds who are not showing must complete an entry agreement and liability statement in the show office prior to being ridden on the grounds. Also must follow all Veterinarian regulations.



Equine - Shows - Portraits - Lifestyle



revelry.media



224-595-9692







revelrymedia.me



therevelryphotography@gmail.com



From barn to ring, every stride, every jump, and every connection between horse and rider is documented with care and artistry. With years of experience behind the lens and a deep passion for the equestrian lifestyle, Madeline brings you:

-  High-resolution edited galleries
-  Dynamic reels & video coverage
-  Private client packages for full show weeks
-  Golden hour portraits & candid moments

Whether you're in short stirrups all the way up to Grand Prix, Madeline ensures your memories last a lifetime.



@madelinegammillphoto



@madelinegammillphoto



757-262-8789



madelinepgammill@gmail.com

Directions & Lodging

VENDORS

Hay & Shavings: Tri-County Feeds

Show Photography:

Revelry Media (Week 1)

Madeline Gammill (Week 2)

Food Vendor: Jump Start Cafe

COMMUNICATIONS

Online Entries: Horse Spot

horsespot.net

Promotions: ASTRO Marketing

540-645-9475

Prizes & Sponsorship: Darrin Mollett

FACILITIES

Grounds: David McClung

Stabling, Arenas & Jumps:

Fauquier Farm Services

DIRECTIONS & LODGING

Directions

Beverly Equestrian

7120 Beverly Lane

The Plains, VA 20198

☎ 901-210-5067

🌐 www.beverlyequestrian.com/shows

GPS: 38.88897 N, 77.79632 W

- From the North (I-95 / I-66): Take I-95 South or I-81 South to I-66 West toward Front Royal. Take Exit 31 (The Plains). Turn left onto Route 245/Old Tavern Road. Follow signs into The Plains. Turn right onto Main Street, then left onto Beverly Lane. The entrance to Beverly Equestrian is directly ahead.
- From the South (Charlottesville / Warrenton): Take Route 29 North to Warrenton. Merge onto Route 17 North toward Paris/Winchester. Exit right at The Plains interchange. Turn left onto Main Street, then left onto Beverly Lane. Beverly's entrance is directly off Beverly Lane.
- From the East (Washington, DC / Northern Virginia): Take I-66 West to Exit 31 (The Plains). Turn left onto Route 245/Old Tavern Road. Follow signs into The Plains. Turn right onto Main Street, then left onto Beverly Lane. Beverly is directly ahead.
- From the West (Winchester / Front Royal): Take I-66 East to Exit 31 (The Plains). Turn right onto Route 245/Old Tavern Road. Follow signs into The Plains. Turn right onto Main Street, then left onto Beverly Lane. The entrance is directly off Beverly Lane.

Area Hotels

- Salamander Resort & Spa – Middleburg, VA – 866-938-7370
- Red Fox Inn & Tavern – Middleburg, VA – 540-687-6301
- Hilton Garden Inn Haymarket – Haymarket, VA – 703-753-4860
- Hampton Inn Gainesville-Haymarket – Gainesville, VA – 703-753-1500
- Holiday Inn Express & Suites Warrenton – Warrenton, VA – 540-341-3461
- Airlie Hotel – Warrenton, VA – 540-347-1300
- Best Western Battlefield Inn – Manassas, VA – 703-361-8000
- Residence Inn Chantilly – Chantilly, VA – 703-263-7900

MEDICAL INFORMATION

NEARBY HOSPITALS & TRAUMA FACILITIES

Fauquier Health

📍 500 Hospital Drive, Warrenton, VA 20186

☎ 540-316-5000

Trauma Level: Not designated (24/7 Emergency Department only)

Distance: ~10.5 miles (≈ 15 minutes)

Valley Health Winchester Medical Center

📍 1840 Amherst Street, Winchester, VA 22601

☎ 540-536-8000

Trauma Level: Level II Trauma Center

Distance: ~30 miles (≈ 40 minutes)

Inova Loudoun Hospital

📍 44045 Riverside Parkway, Leesburg, VA 20176

☎ 703-858-6000

Trauma Level: Level III Trauma Center

Distance: ~28 miles (≈ 35 minutes)

Inova Fairfax Medical Campus

📍 3300 Gallows Road, Falls Church, VA 22042

☎ 703-776-4001

Trauma Level: Level I Trauma Center (highest designation in Northern VA)

Distance: ~52 miles (≈ 1 hour 10 minutes) Facility Map



- Breakfast
- Lunch
- Salads
- Daily Specials
- Gluten Free & Vegetarian Menu Available

Located by the Main Barn

Eat • Drink • Enjoy
434.996.7992

2024 TAKE2 Hunter Finals Champion
Capture The Music and Hunter Kay

Winslow Photography

2023 TAKE2 Jumper Finals Champion
A Lil Evil and Kathryn Currey

Winslow Photography



Join the TAKE2 Thoroughbred League!

League Members are eligible for the

**\$20,000 TAKE2 Hunter-
Jumper Finals***

League Members compete for

\$10,000 in Year-End High-Score Awards, paid out to 10th place

To join the TAKE2 Thoroughbred League, or for more information, go to: www.take2tbreds.com

*You must be enrolled in the League during the 2024-25 season to compete in the 2025 TAKE2 Finals!

For more than 10 years, the TAKE2 Second Career Thoroughbred Program has been promoting new careers for retired racehorses, partnering with

Thoroughbred Hunter and Jumper Divisions at more than 600 USEF-rated horse shows nationwide. TAKE2 is a 501 (c)(3) organization.





WAIVER AND RELEASE OF LIABILITY, ASSUMPTION OF RISK AND INDEMNITY AGREEMENT

For and in consideration of United States Equestrian Federation, Inc. dba US Equestrian ("USEF") allowing me, the undersigned, to participate in any capacity (including as a rider, driver, handler, vaulter, longeur, lessee, owner, agent, coach, official, trainer or volunteer) in a USEF sanctioned, licensed or approved event or activity, including but not limited to equestrian clinics, practices, shows, competitions and related or incidental activities and _____ ("USEF Event" or "USEF Events"); I, for myself, and on behalf of my spouse, children, heirs and next of kin, and any legal and personal representatives, executors, administrators, successors, and assigns, hereby agree to and make the following contractual representations pursuant to this Agreement (the "Agreement"):

A. **RULES AND REGULATIONS:** I hereby agree that I have read, understand, and agree to be bound by all applicable Federation Bylaws, rules, and policies including the USEF Safe Sport Policy and Minor Athlete Abuse Prevention Policies (MAAPP) as published at www.usef.org, as amended from time to time.

B. **ACKNOWLEDGMENT OF RISK:** I knowingly, willingly, and voluntarily acknowledge the inherent risks associated with the sport of equestrian and know that horseback riding and related equestrian activities are inherently dangerous, and that participation in any USEF Event involves risks and dangers including, without limitation, (i) the propensity of an equine to behave in dangerous ways which may result in injury to the participant; (ii) the inability to predict an equine's reaction to sound, movements, objects, persons, or animals; and (iii) hazards of surface or subsurface conditions; (iv) the potential for serious bodily injury (including broken bones, head or neck injuries), sickness and disease (including communicable diseases), trauma, pain & suffering, permanent disability, paralysis and death; (v) loss of or damage to personal property (including my mount & equipment) arising out of the unpredictable behavior of horses; exposure to extreme conditions and circumstances; (vi) accidents involving other participants, event staff, volunteers or spectators; contact or collision with other participants and horses, natural or manmade objects; adverse weather conditions; (vii) facilities issues and premises conditions; failure of protective equipment (including helmets); (viii) inadequate safety measures; participants of varying skill levels; (ix) situations beyond the immediate control of the USEF Event organizers and competition management; and (x) other undefined, not readily foreseeable and presently unknown risks and dangers. ("Risks").

CAUTION: HORSEBACK RIDING AND EQUINE ACTIVITIES CAN BE DANGEROUS. RIDE AT YOUR OWN RISK.

Under VA Code Ann. Sec 3.2-6200-6203, an equine activity sponsor or equine professional is not liable for any injury to, or the death of, a participant in equine activities resulting from the inherent risks of equine activities.

C. **ASSUMPTION OF RISK:** I understand that the aforementioned Risks may be caused in whole or in part or result directly or indirectly from the negligence of my own actions or inactions, the actions or inactions of others participating in the USEF Events, or the negligent acts or omissions of the Released Parties defined below, and I hereby voluntarily and knowingly assume all such Risks and responsibility for any damages, liabilities, losses, or expenses that I incur as a result of my participation in any USEF Events. I also agree to be responsible for any injury or damage caused by me, my horse, my employees or contractors under my direction and control at any USEF Event.

D. **WAIVER AND RELEASE OF LIABILITY, HOLD HARMLESS AND INDEMNITY:** In conjunction with my participation in any USEF Event, I hereby release, waive and covenant not to sue, and further agree to indemnify, defend and hold harmless the following parties: USEF, USEF Recognized Affiliate Associations, the United States Olympic & Paralympic Committee (USOPC), USEF clubs, members, Event participants (including athletes/riders, coaches, trainers, judges/officials, and other personnel), the Event owner, licensee, and competition managers; the promoters, sponsors, or advertisers of any USEF Event; any charity or other beneficiary which may benefit from the USEF Event; the owners, managers, or lessors of any facilities or premises where a USEF Event may be held; and all directors, officers, employees, agents, contractors, and volunteers of any of the aforementioned parties (Individually and Collectively, the "Released Parties" or "Event Organizers"), with respect to any liability, claim(s), demand(s), cause(s) of action, damage(s), loss, or expense (including court costs and reasonable attorney fees) of any kind or nature ("Liability") which may arise out of, result from, or relate in any way to my participation in the USEF Events, including claims for Liability caused in whole or in part by the negligent acts or omissions of the Released Parties.

E. **COMPLETE AGREEMENT AND SEVERABILITY CLAUSE:** This Agreement represents the complete understanding between the parties regarding these issues and no oral representations, statements or inducements have been made apart from this Agreement. If any provision of this Agreement is held to be unlawful, void, or for any reason unenforceable, then that provision shall be deemed severable from this Agreement and shall not affect the validity and enforceability of any remaining provisions.

I HAVE CAREFULLY READ THIS DOCUMENT IN ITS ENTIRETY, UNDERSTAND ALL OF ITS TERMS AND CONDITIONS, AND KNOW IT CONTAINS AN ASSUMPTION OF RISK, RELEASE AND WAIVER FROM LIABILITY, AS WELL AS A HOLD HARMLESS AND INDEMNIFICATION OBLIGATIONS.

By signing below, that I have read, understand, and agree to be bound by all applicable Federation Bylaws, rules, and policies including the USEF Safe Sport Policy and Minor Athlete Abuse Prevention Policies (MAAPP) as published at www.usef.org, as amended from time to time, as well as all terms and provisions of this Prize List. If, despite this Agreement, I, or anyone on my behalf or the minor's behalf, makes a claim for Liability against any of the Released Parties, I will indemnify, defend and hold harmless each of the Released Parties from any such Liabilities as the result of such claim.

The parties agree that this agreement may be electronically signed. The parties agree that the electronic signatures appearing on this agreement are the same as handwritten signatures for the purposes of validity, enforceability, and admissibility.

☐ RIDER/DRIVER/HANDLER/VAULTER/LONGEUR ☐ OWNER ☐ TRAINER ☐ OFFICIAL ☐ STAFF ☐ VOLUNTEER ☐ COACH (IF APPLICABLE)

Signature: _____ Date: _____ Print Name: _____

Parent/Guardian Signature: (Required if Rider/Driver/Handler/Vaulter/Longeur is a minor) _____ Date: _____

Print Parent/Guardian Name: _____ Emergency Contact Phone No. _____

#	The Beverly Premiere				HORSE SPOT			
October 23, 2025 - October 26, 2025				Beverly Equestrian The Plains, VA				
Horse/Pony		USEF #	USHJA #	Color	Sex	Height	Foal Date	
Rider 1		USEF #	USHJA #	DOB	Classes			
Rider 2		USEF #	USHJA #	DOB	Classes			
Owner		Rider 1		Rider 2		Trainer		
Address		Address		Address		Address		
City State Zip		City State Zip		City State Zip		City State Zip		
Email		Email		Email		Email		
Phone +1		Phone +1		Phone +1		Phone +1		
USEF # USHJA #		USEF # USHJA #		USEF # USHJA #		USEF # USHJA #		
Notes		Notes		Notes		Notes		
Is a U.S. Citizen?		Is a U.S. Citizen?		Is a U.S. Citizen?		Is a U.S. Citizen?		
Yes No		Yes No		Yes No		Yes No		
Federation Entry Agreement								
<p>By entering a Federation-licensed Competition and signing this entry blank as the Owner, Lessee, Trainer, Manager, Agent, Coach, Driver, Rider, Handler, Vaultor or Longeur and as a staff of me and my principals, representatives, employees and agents, I agree that I am subject to the Bylaws and Rules of the United States Equestrian Federation, Inc. (the "Federation") and the local rules of this competition. I agree to be bound by the Bylaws and Rules of the Federation and of the competition. I will accept as final the decision of the Hearing Committee on any question arising under the Rules, and agree to release and hold harmless the competition, the Federation, their officials, directors and employees for any action taken under the Rules. I represent that I am eligible to enter and/or participate under the Rules, and every horse I am entering is eligible to compete in the competition, sport, or the Federation. These Bylaws shall not be used to advertise a product and they may not be used in such a way as to jeopardize amateur status. I hereby expressly and irrevocably waive and release any rights in connection with such use, including any claim to compensation, invasion of privacy, right of publicity, or other such claim. The construction and application of Federation rules are governed by the laws of the State of New York, and any action instituted against the Federation must be filed in New York State. See GRIPOSA. If not currently a USEF Active Competing member or Subscriber, I acknowledge that I will be enrolled for my electronic signature in the USEF Fan Account will continue to annually automatically renew in USEF's sole discretion. Additionally, I acknowledge that the benefits of a USEF Fan are subject to change without notice. USEF may in its sole discretion, at any time, terminate my USEF Fan status. BY SIGNING BELOW, I AGREE that I have read, understood, and agree to the terms and conditions of the USEF Safe Sport Policy and Minor Athlete Abuse Prevention Policies (MAAAP) as published at www.usef.org, as amended from time to time, as well as all terms and provisions of this Print List. If I am signing and submitting this Agreement electronically, my electronic signature shall have the same validity, force and effect as if I affixed my signature by my own hand.</p>								
Signatures				Credit Card Information				
Rider 1/Driver/Handler/Vaultor/Longeur				Card #:				
Signature				Exp: CVV:				
Print Name				Billing Zip Code:				
Rider 2/Driver/Handler/Vaultor/Longeur				Name on Card:				
Signature				Signature:				
Print Name				Email:				
Emergency Contact Name & Phone Number								

#	The Beverly Classic				HORSE SPOT			
October 30, 2025 - November 2, 2025				Beverly Equestrian The Plains, VA				
Horse/Pony		USEF #	USHJA #	Color	Sex	Height	Foal Date	
Rider 1		USEF #	USHJA #	DOB	Classes			
Rider 2		USEF #	USHJA #	DOB	Classes			
Owner		Rider 1		Rider 2		Trainer		
Address		Address		Address		Address		
City State Zip		City State Zip		City State Zip		City State Zip		
Email		Email		Email		Email		
Phone +1		Phone +1		Phone +1		Phone +1		
USEF # USHJA #		USEF # USHJA #		USEF # USHJA #		USEF # USHJA #		
Notes		Notes		Notes		Notes		
Is a U.S. Citizen?		Is a U.S. Citizen?		Is a U.S. Citizen?		Is a U.S. Citizen?		
Yes No		Yes No		Yes No		Yes No		
Federation Entry Agreement								
<p>By entering a Federation-licensed Competition and signing this entry blank as the Owner, Lessee, Trainer, Manager, Agent, Coach, Driver, Rider, Handler, Vaultor or Longeur and as a staff of me and my principals, representatives, employees and agents, I agree that I am subject to the Bylaws and Rules of the United States Equestrian Federation, Inc. (the "Federation") and the local rules of this competition. I agree to be bound by the Bylaws and Rules of the Federation and of the competition. I will accept as final the decision of the Hearing Committee on any question arising under the Rules, and agree to release and hold harmless the competition, the Federation, their officials, directors and employees for any action taken under the Rules. I represent that I am eligible to enter and/or participate under the Rules, and every horse I am entering is eligible to compete in the competition, sport, or the Federation. These Bylaws shall not be used to advertise a product and they may not be used in such a way as to jeopardize amateur status. I hereby expressly and irrevocably waive and release any rights in connection with such use, including any claim to compensation, invasion of privacy, right of publicity, or other such claim. The construction and application of Federation rules are governed by the laws of the State of New York, and any action instituted against the Federation must be filed in New York State. See GRIPOSA. If not currently a USEF Active Competing member or Subscriber, I acknowledge that I will be enrolled for my electronic signature in the USEF Fan Account will continue to annually automatically renew in USEF's sole discretion. Additionally, I acknowledge that the benefits of a USEF Fan are subject to change without notice. USEF may in its sole discretion, at any time, terminate my USEF Fan status. BY SIGNING BELOW, I AGREE that I have read, understood, and agree to the terms and conditions of the USEF Safe Sport Policy and Minor Athlete Abuse Prevention Policies (MAAAP) as published at www.usef.org, as amended from time to time, as well as all terms and provisions of this Print List. If I am signing and submitting this Agreement electronically, my electronic signature shall have the same validity, force and effect as if I affixed my signature by my own hand.</p>								
Signatures				Credit Card Information				
Rider 1/Driver/Handler/Vaultor/Longeur				Card #:				
Signature				Exp: CVV:				
Print Name				Billing Zip Code:				
Rider 2/Driver/Handler/Vaultor/Longeur				Name on Card:				
Signature				Signature:				
Print Name				Email:				
Emergency Contact Name & Phone Number								



MAAPP

MINOR ATHLETE ABUSE PREVENTION

LEARN ABOUT MAAP POLICIES



Safe Sport Training



Local Travel



One-On-One Interactions Social Media



& Electronic Communications



Read about these & more at usef.org/MAAPP

REPORT MAAP POLICY VIOLATIONS

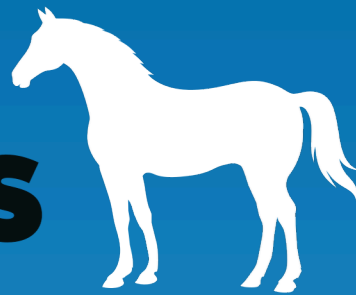


usef.org/safe-sport/reporting 859-225-6915
or Text Anonymously 855-682-8733



KNOW THE SIGNS

USEF HORSE WELFARE



See Guidelines



USEF has developed horse welfare guidelines based on the stoplight system to help us recognize acceptable or unacceptable interactions between horses and humans

GREEN

horse friendly

The horse appears happy, willing, and content.

The connection between horse and human is harmonious and in sync.

YELLOW

cautionary

Actions that cause you to pause and question whether they are acceptable.

Some actions may be acceptable for a very short period of time but may escalate to mistreatment if pressure or conflict increases in intensity.

RED

unacceptable OR not okay

Actions that make you think, "This is not okay."

Actions that make you immediately think,
"This behavior must stop."

Sometimes athletes can be acting in the red zone without even realizing it - these situations may be resolved by a licensed official interrupting the training, discussing the issue, and providing a verbal warning.

If you see an interaction that falls into the red zone, please alert an official to the situation and submit a report.

Scan to report



SAVE THE DATES!

2025-26 BEVERLY SHOW CALENDAR

Beverly Onsite & Offsite Show Calendar
VHSA/BHSA Recognized Onsite Shows

WINTER 2025-26

DECEMBER 20: WINTER 1

JANUARY 17: WINTER 2

FEBRUARY 7: WINTER 3

FEBRUARY 15: WEF 6

FEBRUARY 22: WEF 7

SPRING 2026

MARCH 14: SPRING 1

MARCH 22: WEF 11

MARCH 29: WEF 12

APRIL 18: SPRING 2

MAY 23: SPRING 3

